

LIGHTED WALL-MOUNTED MIRROR INSTRUCTION SHEET

91405HW 91415HW 91425HW 91435HW 91445HW 91455HW
91465HW 91475HW 91485HW 91495HW 914135HW

FEATURES

The lighted mirror is suitable in a dim lighted room. The built-in 9 watts Spiral Compact Fluorescent bulb is a suitable light source for makeup and it does not need extra light source which can save more energy and avoid interrupting other people in the same room.

OPERATING INSTRUCTIONS

1. Turn switch to the "OFF" position. Plug cord into any standard 120 volt wall outlet. Turn switch to the "ON" position.
2. Lighted mirror will rotate so that you can use either the normal, flat mirror or 5X magnifying mirror located on the opposite side.
3. After use, always turn switch to the "OFF" position.
4. Unplug it from outlet when not in use.

IMPORTANT SAFETY INSTRUCTIONS

THIS APPLIANCE IS INTENDED FOR HOUSEHOLD USE. WHEN USING ELECTRICAL APPLIANCES, BASIC SAFETY PRECAUTIONS SHOULD ALWAYS BE FOLLOWED, INCLUDING THE FOLLOWING:

WARNING - To reduce the risk of burns, electrocution, fire, or injury to persons:

1. Read all instructions before using the appliance and keep them for later reference.
2. To protect against electrical hazards, do not use while bathing or in the shower and do not touch plug or switch with wet hands.
3. To reduce the risk of burns.
 - 3.1. Avoid swivel the makeup mirror into horizontal position when turn switch to "ON".
 - 3.2. Do not touch the housing especially the top half and mirrors when turn on the switch or off within 10 minutes.
4. Repairs and service should always be carried out by an authorized service center. Do not use the appliance if it is damaged or if the cable is damaged. Instead, send it to a service department.
5. Be sure mirror is not in a position where it can reflect sunlight; reflected sunlight can cause fire.
6. After use, always pull the plug from the socket.
7. Handle cord carefully for longer life; do not jerk or strain at plug connections, or wrap cord around mirror for storage. This could cause damage to the cord and short circuit. To store mirror, coil cord loosely.
8. Use only the original accessories supplied.
9. Allow the light bulb in the mirror time to cool down before storing it away.
10. Do not lay a switched appliance on soft furnishings, such as a bed, cushion, etc. This will prevent over-heating.
11. Instruct young children about the dangers and safety rules concerning electrical equipment.
12. Never let young children use electrical equipment without supervision.
13. Turn switch to "OFF" position and unplug cord before replacing light bulbs.
14. Do not place, hang or store appliance where it can fall or be pulled into a tub or sink.
15. If an appliance falls into water, unplug it immediately. Do not reach into the water.
16. Never use while sleeping.
17. Do not place in or drop into water or other liquid.

TO REPLACE BULB

CAUTION: TURN OFF POWER AND UNPLUG. ALLOW TO COOL AT LEAST 10 MINUTES BEFORE REPLACING BULB.

NOTE: Do not use a bulb greater than 9 watts. Please use a CFL Bulb (Fig.1) ,9 watts E 26 instead of other shape or sphere shape because it will cause higher temperature to mirrors.

1. Turn the switch to the "OFF" position and unplug the lighted mirror.
2. Unscrew and remove screws using screw driver from both sides of the mirror housing near the rotating hinges. (Fig. 2)
3. Lift off the top half of the housing from the bottom half that is affixed to the stand.
4. Unscrew the old bulb and replace with the new bulb. (Fig. 3)
5. Replace the top housing half and tighten two screws into screw holes.

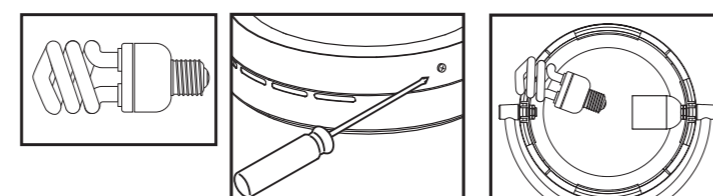


Fig.1

Fig.2

Fig.3

TROUBLE SHOOTING

NO LIGHT: Bulb is not break and switch is in the "ON" position.

1. Check the plug and outlet.
2. Carefully unscrew the bulb and screw it back after follow the procedure of "TO REPLACE BULB"
3. If there is still no light, unplug the lighted mirror and call the manufacturer.

CLEANING AND MAINTENANCE

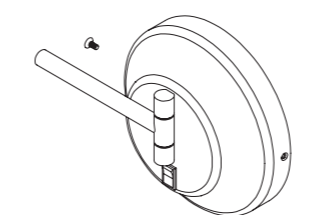
Always unplug lighted mirror first. Clean the outside of appliance with a damp cloth. Never immerse it in water or any other liquid. Clean mirror surfaces with a glass cleaner. Do not light until you are certain mirror is completely dry to protect against electrical hazards.

Please turn over

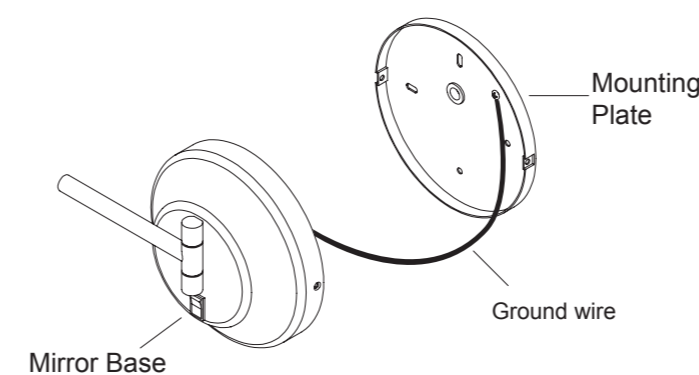
Front

INSTALLATION INSTRUCTIONS

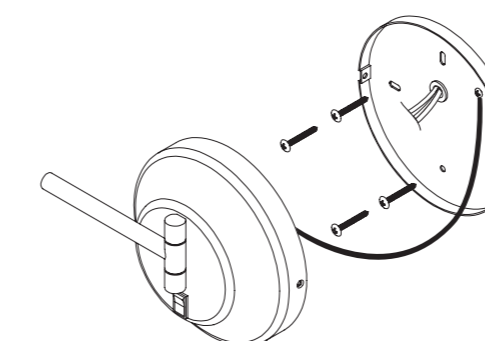
1. Aptations, Inc recommends using a qualified electrician for all electrical wiring procedures and installations.
2. A standard 120 Volts AC electrical box must be installed at the desired location of the wall before continuing.
3. Remove the mounting screws on both sides of the mirrors base.



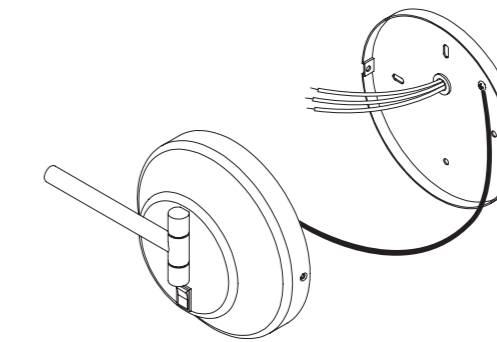
4. Remove the mounting plate from the base and unfastened the green ground wire attached to the mounting plate.



5. Secure the mounting plate to the electrical box on the wall with four(4) wall anchors and mounting screws.



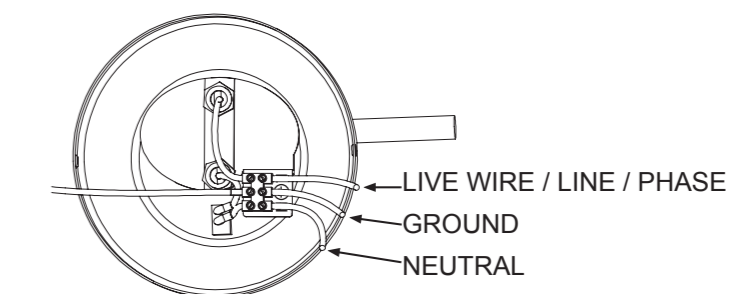
6. Feed the electrical wires from the electrical box through the mounting plate and reserve convenient length.



7. Connect the electrical wires coming from the electrical box to the terminal connections in the base of mirror. Tighten the set screws and re-fasten the ground wire from the mirror to its fastening location on the mounting plate that is attached to the electrical box. The mirror must be grounded when installed.

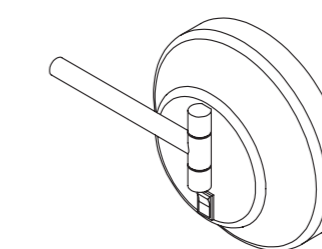
Wire references are:

- L** — Live wire/Line/Phase (Black wire)
- N** — Neutral (White wire)
- ⊖** — Ground (Green/Yellow wire)



8. Finish installing mirror by mounting base of mirror over the base plate that is attached to the electrical box.

9. Fasten the mounting screws on both sides of the base.



10. Put mirror at desired position and turn black rocker switch on for use.

Back

914X5HW (Eng.)
User Manual

Dim: 227mm (W) x 273mm (H)
Letter height at less 1.6mm