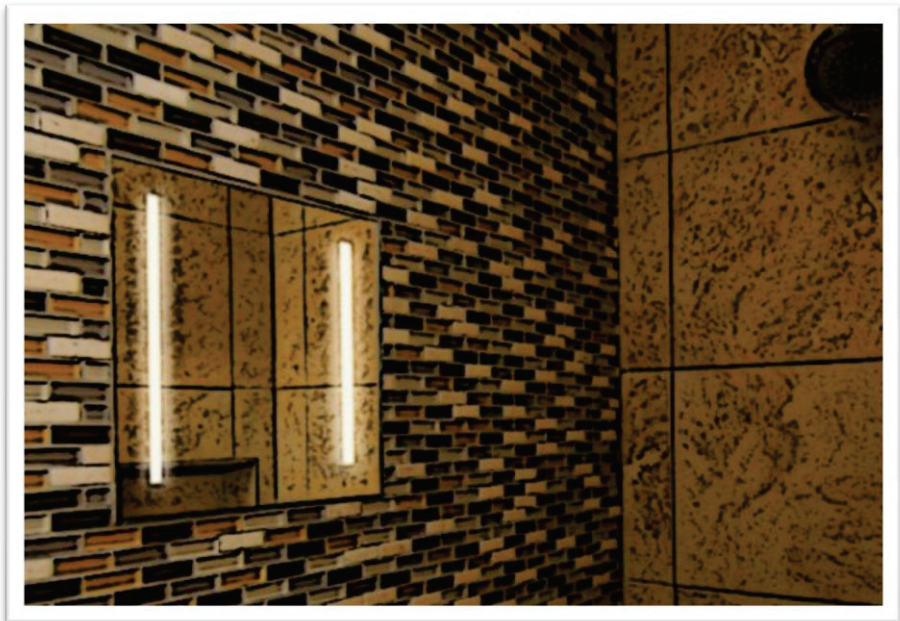


NewHome Bath & Mirror

ShowerLite Installation Instructions

ClearMirror™-Brand Mirror Defogger Systems
March 2013 Model 16104-121224BL



ShowerLite Installation Instructions

The ShowerLite™ is UL/C-UL listed and tested to CSA standards. This unit is designed to be powered by a switched outlet and activated when the bathroom light or fan is switched on.

IMPORTANT INSTRUCTIONS

Only wire the ShowerLite to the 24-volt DC direct plug-in power supply included with this product. Install to a junction box in accordance with all applicable safety, national and local electrical codes.

When using electrical appliances, basic precautions should always be followed to reduce the risk of fire, electrical shock, and injury to persons including the following:

General Guidelines

- Read all instructions before installing or using this heater.
- Extreme caution is necessary when any heater is used by or near children or invalids and whenever the heater is left operating and unattended.
- Do not operate any heater after it malfunctions. Disconnect power at service and have heater inspected by a reputable electrician before reusing.
- Do not use outdoors.
- To disconnect heater, turn controls to off using light/fan/receptacle switch, and turn power off to heater circuit at the main disconnect panel.
- Use this heater only as described in this manual. Any other use not recommended by the manufacturer may cause fire, electric shock, or injury to persons.
- Do not install on un-insulated exterior walls in cold climate areas.
- Do not install if product is damaged.
- Do not bend, cut, alter, submerge in water, or use product for purposes other than described.
- Mirror must be caulked or grouted into tile, flush with the tile surface. Edges of the mirror cannot be exposed to touch.
- Contact NewHome Bath & Mirror for LED replacement parts.
- Consult the NEC, Article 551 for rec. vehicle installation.
- SAVE THESE INSTRUCTIONS.

Observe Electrical Load Requirements

NOTICE

New receptacles must be installed by a qualified electrician and shall follow National Electrical Code or local codes as applicable.

NOTICE

Installation shall be in accordance with the applicable installation code, NFPA 70-2011, National Electrical Code.

NOTICE

Product wiring shall be effectively segregated from building wire in accordance with the applicable installation code NFPA 70-2011, National Electrical Code.

NOTICE

Only use 24 Volt power supply included with this product.

CAUTION

Use only on 15 ampere branch circuit. Total amperage must not exceed rating of wall switch (i.e. 15-amp switch), circuit or existing wiring.

WARNING

Direct plug-in power supply must be placed in a dry location outside of the shower. Outlet used must be at least three feet from the shower. Follow NEC Article 406.

ShowerLite Installation Instructions

Installation

! NOTICE

Installation shall be in accordance with the applicable installation code, NFPA 70-2011, National Electrical Code.

! WARNING

To reduce the risk of fire, do not store or use gasoline or other flammable vapors and liquids in the vicinity of the heater.

1. Before installing wall board or ceramic tile, measure for desired ShowerLite height from the finished shower floor.
2. Prepare an area 12" x 12" for the ShowerLite mirror.
3. Mark the location installation of the junction box integral to the ShowerLite construction.
4. Measure for the location of the LED lights (2.25" x 9.25").
5. Remove that area of wallboard to allow the mirror to install flush with the tile (see Figure 1).

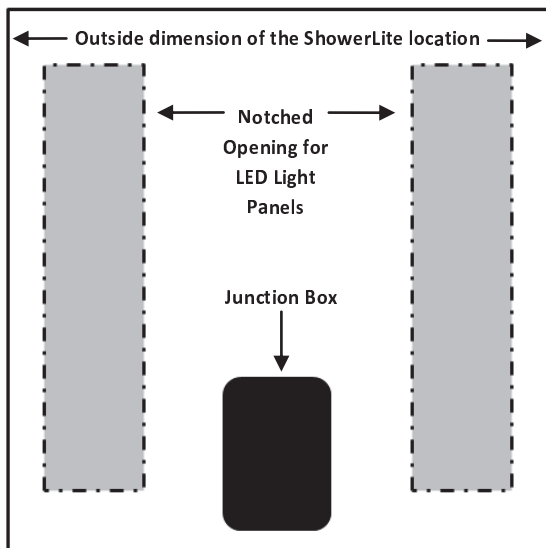


Figure 1. Preparing the wall board (front view).

! NOTICE

Position the junction box behind the black heater leads so connections are easily stowed in the junction box.

! NOTICE

Turn off the power to the circuit connected to the heater at the disconnect means.

Junction Box and Wiring

! NOTICE

Product wiring shall be effectively segregated from building wire in accordance with the applicable installation code NFPA 70-2011, National Electrical Code.

! NOTICE

Direct plug-in power supply must be placed in a dry location outside of the shower. Outlet used must be at least three feet from the shower. Follow NEC Article 406.

1. Run power supply wires from the provided low-voltage plug-in power supply to the junction box location. Power supply wires are run behind the wall.

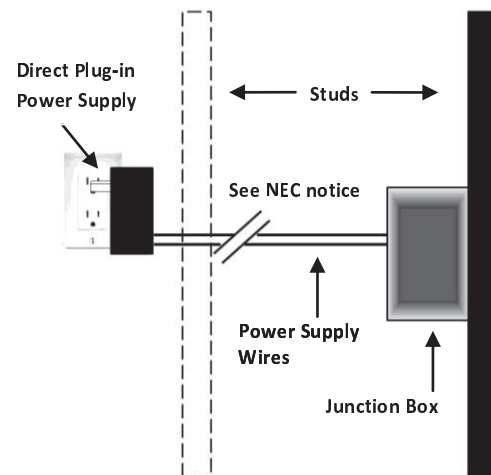


Figure 2. Running the power wires and mounting the mirror to the wall board (front view).

2. Install junction box according to the manufacturer's instructions.

! NOTICE

All wiring between the junction box and direct plug-in power supply shall be in accordance with the applicable installation code, NFPA 70-2011, National Electrical Code.

! NOTICE

The direct plug-in power supply must be accessible for service and replacement.

ShowerLite Installation Instructions

3. Tape the corrugated template (provided) in the desired location over the junction box.
4. Install tile to the edge of the template.

NOTICE

Template is 12" x 12" and is approximately 1/8" larger than the mirror to allow room to caulk or grout the mirror into the tile.



Figure 3. Use the provided connectors to connect the power supply wires to the transformer and the leads on the lights and the heater.

5. Connect power supply wires to an open slot on the connectors (see Figure 3).
6. Position the connectors and wire leads in the junction box.

NOTICE

Do not let the mirror hang from the connected wires during installation. Doing so will damage the mirror and will void your warranty!

7. Apply mirror mastic to the backside of the mirror. Only apply mastic on the backside outside edges. Do not apply mastic on the heating pad or the lights.
8. Place mirror into the opening keeping a 1/8-inch border around the entire mirror (see Figure 4).

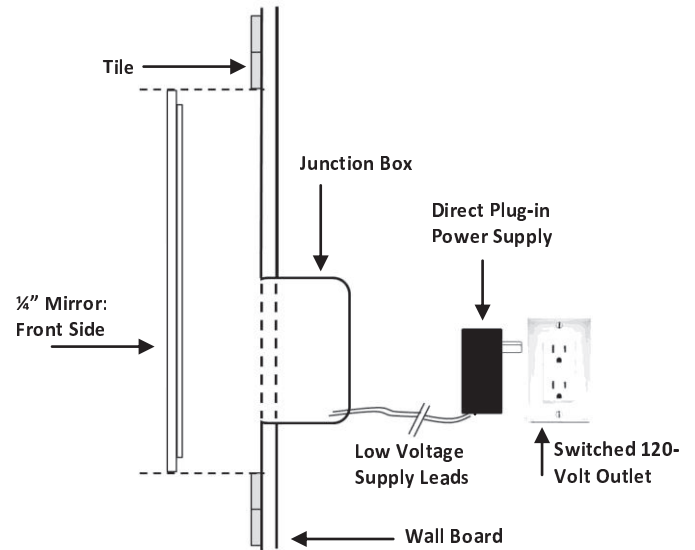


Figure 4. Running the power wires and mounting the mirror to the wall board (side view).

9. Caulk or grout around the edges. Tape or brace the mirror in place until the mastic and caulk or grout is set-up and secure.



Figure 5. Grout around the mirror to seal and finish.

NOTICE

Silicone-based adhesives and caulks may harm mirror silvering. Use only approved mirror mastics on the back side of the mirror.

NOTICE

Mirror must be caulked or grouted into tile complete and flush with the tile surface. Back edge of mirror may not be exposed.

ShowerLite Installation Instructions

Operating Instructions



NOTICE

The heater must be properly installed before it is used.

The ShowerLite is typically turned on and off with a switch that operates a bathroom light or fan. The ShowerLite may also be wired to an independent switch.

ShowerLite should be switched off when not in use.



NOTICE

For best defogging results, allow 3 to 5 minutes for mirror to warm up prior to turning on the shower or the steam generator.

Maintenance Instructions

There are no serviceable parts behind the mirror. If the mirror is not operating, check to insure the direct plug-in power supply is operating properly. Replace the direct plug-in power supply, if necessary.

Contact NewHome Bath & Mirror for replacement parts.



NOTICE

The direct plug-in power supply must be accessible for service and replacement.

Expectations and Care Instructions

Before cleaning, make sure the power has been switched off and that the heating element of the heater is cool.

- Never use ammonia-based cleaners on or around the mirror. Ammonia is the major cause of mirror “black edge”.
- Harsh abrasives and tile scrubs may scratch the mirror surface.
- All mirrors will show damage over time. Caulked and grouted edges must be kept in good repair to keep moisture from the back side of the mirror. Mirror deterioration is not a “manufacturer defect” and will not be covered under warranty.

Mirror Mastic Adhesives

Use only mirror mastic adhesive on the back side of the mirror. Available in caulk gun tubes at hardware stores and home improvement stores. Do not use any other adhesive on the back side of the mirror as it will damage the silvering.

Warranty Information

NewHome Bath & Mirror, Inc. and its affiliates will not warranty the labor or material costs for installation, replacement or use of ShowerLite when operated in an application that is or becomes lower than 50° F.

NewHome Bath & Mirror, Inc. and its suppliers cannot be held responsible for damage caused by improper installation. These installation instructions are to be used as a guide only while meeting all applicable building codes. Consult a professional installer if you have any questions.

The ShowerLite carries a 5-year replacement against defects in manufacturing. Contact your installer for issues relating to installation and replacement. The guarantee is void without proper registration, installation, or if product is altered in any way.